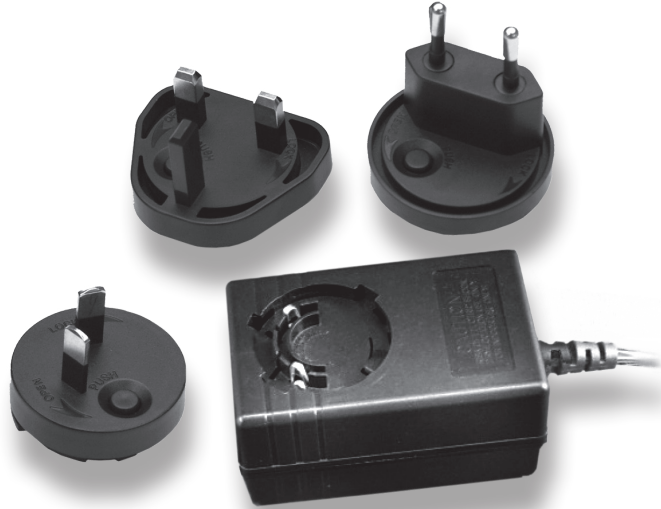


## PA1030I SERIES:



### 30 Watts / Single Output

- 3.11 x 1.89 x 1.50" Wallmount with Detachable AC Plug

#### Features:

- Universal AC Input (90~264 VAC Input Range)
- Detachable AC Plugs for Utilization Around the Globe
- Level V Efficiency
- Class B Emissions
- International Safety Approvals
- 2 Year Warranty

#### INPUT:

Input Voltage	90~264 VAC (Universal AC Input)
Input Frequency	47-63Hz
Inrush Current	40A @ 230 VAC Cold Start
Input Current	450mA maximum
Input Protection	Single Fuse
Hold-Up Time	10ms Minimum
Leakage Current	<750 $\mu$ A @ 240 VAC Maximum
Harmonics	EN61000-3-2 Class A Compliant
Green Power	Less than 0.300W No Load Input Power

#### GENERAL:

Efficiency	75% minimum
Operating Temperature	0-40°C, derate linearly to 50% Load at 50°C
Storage Temperature	-20°C to +85°C
Cooling	Convection Cooled
Operating Humidity	5-95% RH, Non-Condensing
Vibration	5 ~ 50 Hz, acceleration 7.35 m/s <sup>2</sup> s on X,Y and Z Axis
MTBF	>50k Hrs (according to MIL-HBK-217F) at 25°C

#### OUTPUT:

Minimum Load	n/a
Line Regulation	$\pm$ 1% max
Load Regulation	$\pm$ 5% max
Ripple & Noise	$\pm$ 1% typ. pk-pk @ 20MHz
Overload Protection	110-135% of max power (Foldback)
Over Voltage	Latching >130% of nominal
Short Circuit Protection	Continuous (auto-recovery)

#### EMC:

Electrostatic Discharge	EN61000-4-2, $\pm$ 4KV Contact / $\pm$ 8KV Air Discharge
Radiated Susceptibility	EN61000-4-3, 26-1000MHz, 10V/M, 80% AM
EFT / Bursts	EN61000-4-4, $\pm$ 2KV
Surges	EN61000-4-5, $\pm$ 2KV Line-Earth, $\pm$ 1KV Line-Line
Conducted Immunity	EN61000-4-6, 0.15-800MHz, 10V, 80% AM
Voltage Dips	EN61000-4-10, 95% Dip & 10ms, 30% Dip & 500ms
Voltage Interruptions	EN61000-4-11, 95% reduction, 5s
Fluctuations & Flicker	EN61000-3-3

#### APPROVALS:

Emissions EN55022 Class B  
 FCC ANSI C63.4 Class B  
 BSMI CNS13438

Safety Approvals cTUVus EN60950-1  
 CB EN60950-1  
 C-Tick AS3260(AS/NSZ60950)  
 BSMI CNS14336  
 EISA / ErP Level VI  
 CE Mark (LVD)



## PA1030I SERIES:

### Output Specifications:

Model:	Vout	Max Output Current
PA1030-033-I	3.3 VDC	4000mA
PA1030-050-I	5.0 VDC	4000mA
PA1030-075-I	7.0 VDC	4000mA
PA1030-090-I	9.0 VDC	3333mA
PA1030-120-I	12 VDC	2500mA
PA1030-150-I	15 VDC	2000mA
PA1030-180-I	18 VDC	1667mA
PA1030-190-I	19 VDC	1579mA
PA1030-240-I	24 VDC	1250mA
PA1030-270-I	27 VDC	1111mA
PA1030-300-I	30 VDC	1000mA
PA1030-360-I	36 VDC	833mA
PA1030-480-I	48 VDC	625mA

- All Models ship with US Plug (Standard), Additional plugs sold seperately (consult sales)
- Power Supply can be set to any voltage ranging between 3.0 ~ 50 VDC and maintain all safety approvals.
- Standard Cable Length is 6 feet.
- Additional suffix to designate output connector is required, see connectvot options at <http://advpower.com/dcconnector.pdf>

### OUTLINE DRAWING:

