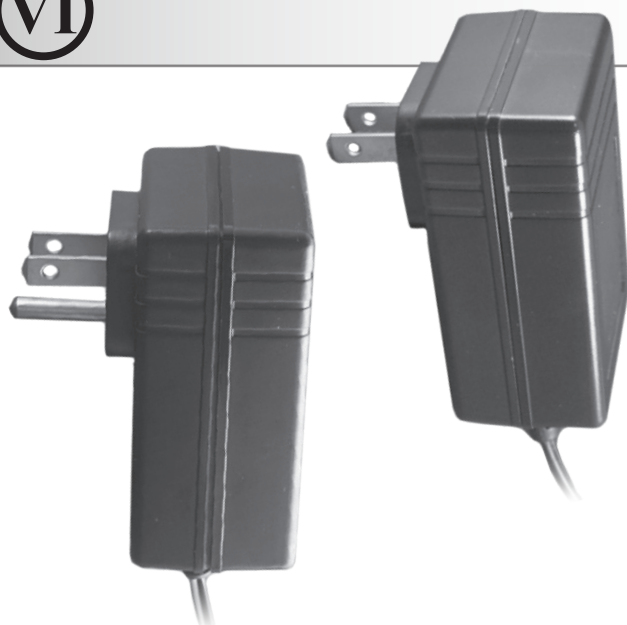


PA1030DU SERIES:



30 Watts / Single Output

- 2.76 x 1.54 x 1.06" UL94V-0 Plastic Case (US Wallmount)

Features:

- Universal AC Input (90~264 VAC Input Range)
- EISA 2007 / ErP Level VI Compliant
- Grounded or Un-Grounded Wallmount Package
- Class B Emissions
- International Safety Approvals
- 2 Year Warranty

INPUT:

Input Voltage	90~264 VAC (Universal AC Input)
Input Frequency	47-63Hz
Inrush Current	40A @ 230 VAC Cold Start
Input Current	500mA maximum
Input Protection	Single Fuse
Hold-Up Time	10ms Minimum
Leakage Current	<750 μ A @ 240 VAC Maximum
Harmonics	EN61000-3-2 Class A Compliant
Green Power	Less than 0.300W No Load Input Power

OUTPUT:

Minimum Load	n/a
Line Regulation	\pm 1% max
Load Regulation	\pm 5% max
Ripple & Noise	\pm 1% typ. pk-pk @ 20MHz
Overload Protection	110-135% of max power (Foldback)
Over Voltage	Latching >130% of nominal
Short Circuit Protection	Continuous (auto-recovery)

GENERAL:

Efficiency	75% minimum
Operating Temperature	0-40°C, derate linearly to 50% Load at 50°C
Storage Temperature	-20°C to +85°C
Cooling	Convection Cooled
Operating Humidity	5-95% RH, Non-Condensing
Vibration	5 ~ 50 Hz, acceleration 7.35 m/s*s on X,Y and Z Axis
MTBF	>50k Hrs (according to MIL-HBK-217F) at 25°C

EMC:

Electrostatic Discharge	EN61000-4-2, \pm 4KV Contact / \pm 8KV Air Discharge
Radiated Susceptibility	EN61000-4-3, 26-1000MHz, 10V/M, 80% AM
EFT / Bursts	EN61000-4-4, \pm 2KV
Surges	EN61000-4-5, \pm 2KV Line-Earth, \pm 1KV Line-Line
Conducted Immunity	EN61000-4-6, 0.15-800MHz, 10V, 80% AM
Voltage Dips	EN61000-4-10, 95% Dip & 10ms, 30% Dip & 500ms
Voltage Interruptions	EN61000-4-11, 95% reduction, 5s
Fluctuations & Flicker	EN61000-3-3

APPROVALS:

Emissions EN55022 Class B
FCC ANSI C63.4 Class B
BSMI CNS13438

Safety Approvals cTUVus EN60950-1
CB EN60950-1
C-Tick AS3260(AS/NSZ60950)
BSMI CNS14336
EISA / ErP Level VI
CE Mark (LVD)



PA1030DU SERIES:

Output Specifications:

Model:	Vout	Max Output Current
--------	------	--------------------

PA1030-033-DU	3.3 VDC	4000mA
PA1030-050-DU	5.0 VDC	4000mA
PA1030-075-DU	7.0 VDC	4000mA
PA1030-090-DU	9.0 VDC	3333mA
PA1030-120-DU	12 VDC	2500mA
PA1030-150-DU	15 VDC	2000mA
PA1030-180-DU	18 VDC	1667mA
PA1030-190-DU	19 VDC	1579mA
PA1030-240-DU	24 VDC	1250mA
PA1030-270-DU	27 VDC	1111mA
PA1030-300-DU	30 VDC	1000mA
PA1030-360-DU	36 VDC	833mA
PA1030-480-DU	48 VDC	625mA

- Suffix required to designate AC input: A = with 3rd Ground Pin B = 2 Pin (No Ground)
- Euro / UK / AUS Wallmount Packages available upon request
- Power Supply can be set to any voltage ranging between 3.0 ~ 30 VDC and maintain all safety approvals.
- Standard Cable Length is 6 feet.
- Additional suffix to designate output connector is required, see connector options at <http://advpower.com/dcconnector.pdf>

OUTLINE DRAWING:

