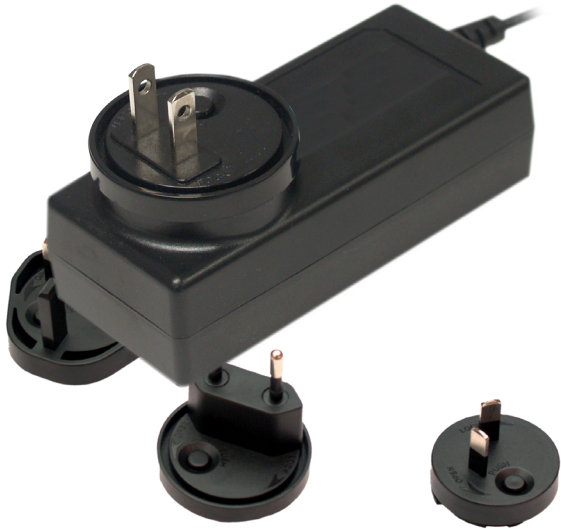


PA1065Ix SERIES:



65 Watts / Single Output

- 4.29 x 1.85 x 1.18" Wallmount with Detachable AC Plug

Features:

- Universal AC Input (90~264 VAC Input Range)
- Detachable AC Plugs for Utilization Around the Globe
- Class I Safety Approvals, Ground Required (IA Models)
- Class II Safety Approvals, No Ground Required (IB Models)
- Level VI Efficiency
- Class B Emissions
- International Safety Approvals (Class II)
- 2 Year Warranty

INPUT:

Input Voltage	90~264 VAC (Universal AC Input)
Input Frequency	47-63Hz
Inrush Current	80A @ 230 VAC Cold Start
Input Current	1800mA maximum
Input Protection	Single Fuse
Hold-Up Time	10ms Minimum
Leakage Current	<700 μ A @ 240 VAC Maximum
Harmonics	EN61000-3-2 Class A Compliant
Green Power	Less than 0.300W No Load Input Power

GENERAL:

Efficiency	>87% minimum
Operating Temperature	0-40°C, derate linearly to 50% Load at 50°C
Storage Temperature	-20°C to +85°C
Cooling	Convection Cooled
Operating Humidity	5-95% RH, Non-Condensing
Vibration	5 ~ 50 Hz, acceleration 7.35 m/s*s on X,Y and Z Axis
MTBF	>40k Hrs (according to MIL-HBK-217F) at 25°C

OUTPUT:

Minimum Load	n/a
Line Regulation	\pm 1% max
Load Regulation	\pm 5% max
Ripple & Noise	\pm 1% typ. pk-pk @ 20MHz
Overload Protection	110-135% of max power (Foldback)
Over Voltage	Latching >130% of nominal
Short Circuit Protection	Continuous (auto-recovery)

APPROVALS:

Emissions	VCCI / SMA / EN55022 Class B FCC ANSI C63.4 Class B
Safety Approvals	UL/cUL 60950-1 CB EN60950-1 TUV/GS EN60950-1 C-Tick AS3260(AS/NSZ60950) CE Mark (LVD)



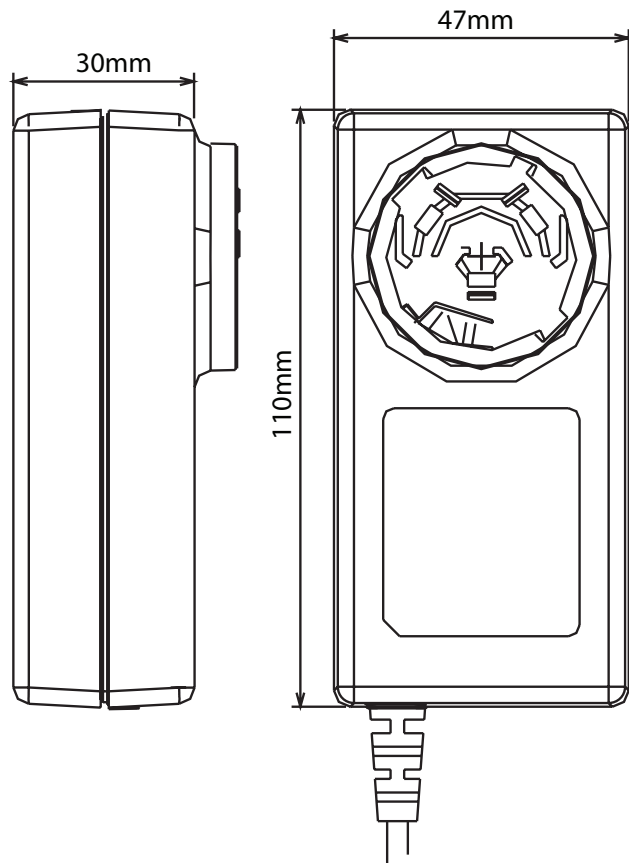
PA1065Ix SERIES:

Output Specifications:

Model:	Vout	Max Output Current	Factory Set Point Range
PA1065-050x800	5VDC	8000mA	5~8.9 VDC
PA1065-120x500	12 VDC	5416mA	9~14.9 VDC
PA1065-150x400	15 VDC	4333mA	15~24 VDC
PA1065-180x333	18 VDC	3361mA	15~24 VDC
PA1065-190x316	19 VDC	3421mA	15~24 VDC
PA1065-240x250	24 VDC	2708mA	15~24 VDC
PA1065-270x222	27 VDC	2407mA	24.1~48 VDC
PA1065-300x200	30 VDC	2166mA	24.1~48 VDC
PA1065-480x125	48VDC	1354mA	24.1~48 VDC

- Power Supply can be set to any voltage ranging between 12~48 VDC and maintain all safety approvals.
- Designate Safety Class Rating by replacing "x" with:
 - A = Class I (Safety earth ground connection required)
 - B = Class II (No safety earth ground required)
- Standard DC Output Cable Length is 6 feet.
- Additional suffix to designate output connector is required, see connector options at <http://www.advpower.com/dcconnector.pdf>

OUTLINE DRAWING:



"B" AC PLUGS (No Safety Ground)

"A" AC PLUGS (Safety Ground)

